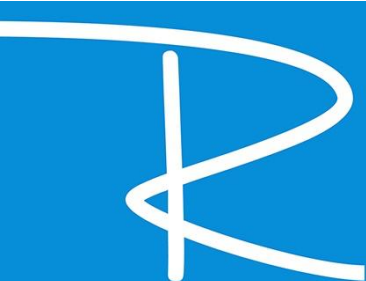




## Technical Specifications



The  
Redgrave  
Theatre



Email: [george@redgravetheatre.com](mailto:george@redgravetheatre.com)

Phone: 0117 3157 605

Venue: Redgrave Theatre, Percival Road

Office: The Chateau, 2 Percival Road

## **Stage Dimensions and Equipment**

### **Stage**

We have no fire curtain and all scenery must conform to the relevant British Standards. Curtains, Drapes and Gauzes should comply with British Standard 5867, parts 1 and 2 and Timber, Hardboard and Plywood with British Standard 476. All wood should be Class 1 and visibly stamped as such. If you are not able to satisfy the Technical Manager or local Entertainment Licensing Officer that your scenery conforms to the relevant standards it will be removed from the venue. Further guidance is available from the Technical Manager.

### **Dimensions**

From back wall to front of stage (centre line):	10.5m
From brick proscenium column SL to SR	10.4m
Across brick wall:	9.9m
Across back traverse (back of acting space):	8.8m
Height of proscenium arch:	5.25m
From SL to SR tormentor:	9.2m
Width of tormentor:	0.7m
Height of SL to SR RSJs:	5.8m - 6m
Height bars fully retracted:	5.7m (approx)
Underside of Fly Floor	4.2m



Email: [george@redgravetheatre.com](mailto:george@redgravetheatre.com)

Phone: 0117 3157 605

Venue: Redgrave Theatre, Percival Road

Office: The Chateau, 2 Percival Road

## **Tecpro Comms**

Headset ports are located in the technical booth, orchestra pit, and across the stage with points DSL, MSL, DSR, MSR.

1x Tecpro Communication Amp MS-7211

5x Tecpro Beltpack BP511

2x Tecpro Beltpack BP111

8x Single Muff Headsets with Microphones SMH210

## **Paging & Relay**

Cloud FOH, Auditorium and backstage paging mic set up in box. Show relay to each of the dressing rooms.

## **Set Management**

Various Stage Weights    8x Stage Braces    3x Tank Traps  
10x Floor Lamp Stands

## **Tabs, Drapes & Curtain Track**

Full surround Black Box curtain tab track

6x Legs (5600mm drop x 1200mm wide)

4x Borders (1300mm drop x 8000mm wide)

1x 10m Cyclorama

1x Full Width black Curtains

1x 8m Crossover track

2x 8m Single track

## **Orchestra Pit**

Please be aware of the apparent risks and hazards located in this area of the Theatre. It is vital that no fire exits or escape routes are blocked, there must always remain a safe method of access/egress. The doors to the main pit area must be kept closed when not in use in accordance with the Theatre's fire policy. Any cables run must be via the FireQuell holes in the wall and not trailed



Email: [george@redgravetheatre.com](mailto:george@redgravetheatre.com)

Phone: 0117 3157 605

Venue: Redgrave Theatre, Percival Road

Office: The Chateau, 2 Percival Road

through door gaps, there are hooks in the ceiling to fasten cables to reduce risk of tripping underfoot. As with the dressing rooms this area must be kept in good condition during your occupation. A bin is located in the basement area, please make proper use of it and if you require emptying/new bags or are unable to locate the bin please let Theatre management know. Additional charges may apply for extensive cleaning.

### **Video**

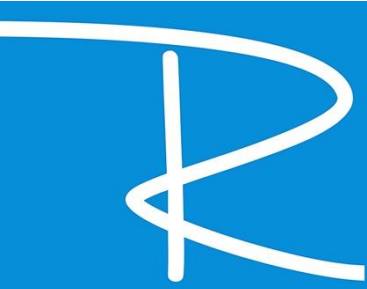
HD Video relay system installed between orchestra pit and FOH3 via CAT6 ports (fixed).

### **Painting**

Absolutely no painting should be done without the use of a protective undersheet. Spot repair must be carried out by the hirer should any damage occur to the painted black stage floor. Additional charges may apply for the rectification of any paint damage.

### **Personal Protective Equipment**

You must provide your own personal protective equipment in accordance with the *Personal Protective Equipment Regulations 2002*, this should also be outlined as control measures in your written risk assessments. Theatre management are only able to supply head protection; bump caps (BS EN 812: *Industrial bump caps*) and safety helmets (BS EN 397: *Industrial Safety Helmets for 'Stage Work'*), these must be requested from the Duty Technician. Bump caps must be worn if there are obstructions overhead or for use on the fly floor; safety helmets must be used when presented with a falling/dropping hazard (e.g. under a ladder). Any additional personal protective equipment must be supplied by the hirer themselves. This should be outlined in your risk assessment, any issues please contact Theatre management who may be able to arrange PPE.



Email: [george@redgravetheatre.com](mailto:george@redgravetheatre.com)

Phone: 0117 3157 605

Venue: Redgrave Theatre, Percival Road

Office: The Chateau, 2 Percival Road

## **Access equipment**

The theatre stocks a variety of ladders for access, all have passed appropriate safety inspections. Please request the use of, and notify the theatre when working at height. All stage bars can be lowered from the fly floor to a safe working height. Further guidance is available in the Hirers Practical Policy.

Zarges Skymaster Industrial 3 Part 12 Rung

- 150kg SWL (3.6m closed, 8.6m open, 6.1m frame)

Aluminium Triple Extension Ladder

- 150kg SWL (2.92m closed, 6.85m open)

Aluminium Double Extension Ladder

- 150kg SWL (3.42m closed, 5.94m open)

Abru Promaster-Plus X4 Combi Ladder

- 150kg SWL (2.4m closed, 4m open, 5.7m frame)

DBT 3-Way Trade & Industrial & Stepladder

- 150kg SWL (1.74m closed, 2.57m open, 1.58 stepladder)

Industrial Step Ladder SL6

- 130kg SWL (1.46m)



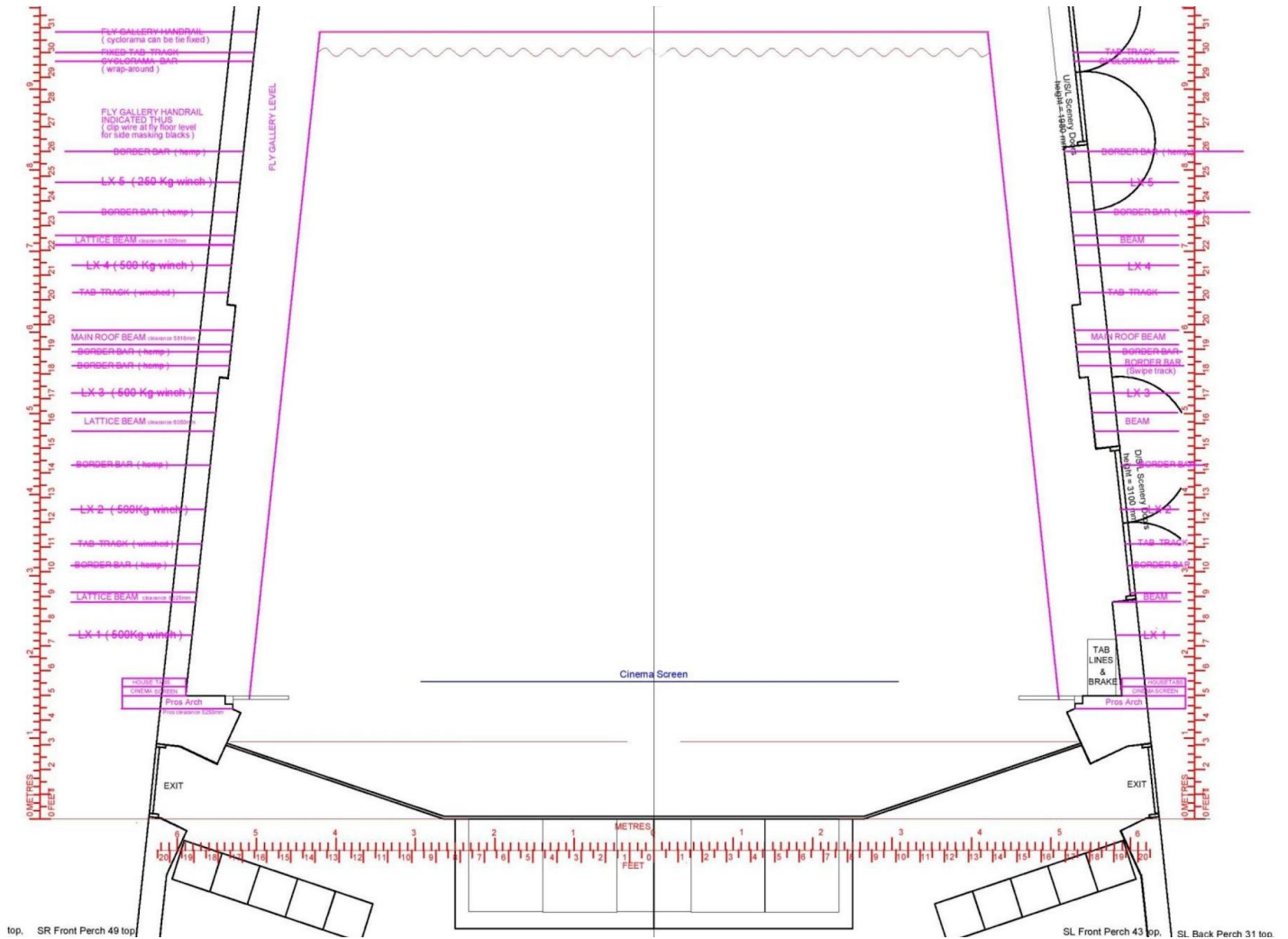
Email: [george@redgravetheatre.com](mailto:george@redgravetheatre.com)

Phone: 0117 3157 605

Venue: Redgrave Theatre, Percival Road

Office: The Chateau, 2 Percival Road

## Stage Plan



## Stage Dimensions

Depth: 10.5m

Back wall width: 9.9m

Pit Opening: 4.67 x 0.93m

Back wall width: 9.9m

Proscenium Height: 4.1m

Safe Working Load: 7.5 kN/m<sup>2</sup>

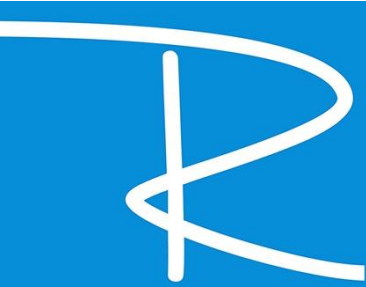
## Bar Safe Working Loads

FOH LX 1/2/3: 200kg

FOH LX Perches: 100kg

Winch Bars: 350kg

Hemp Bars: 50kg



Email: [george@redgravetheatre.com](mailto:george@redgravetheatre.com)

Phone: 0117 3157 605

Venue: Redgrave Theatre, Percival Road

Office: The Chateau, 2 Percival Road

## **Lighting**

### **Desk**

ETC ION with 40 fader wing and dual screen - standard setup in technical box, operation alternatives in auditorium (for plotting) or DSR via DMX In points.

### **Dimming**

6x Zero 88 Chilli Pro 2410i Inductive Dimmers.

Each circuit has its own dimmer and is selectable between dimmer power or constant power.

### **Additional Sockets**

1x 63a 3 phase socket located in the basement (the theatre does not stock any cable length for this).

### **Tape**

Tape is permitted but please check with a member of staff before using it on the floor or walls. This must be removed at the end of your hire period or charges may be applied. White and Black Gaffa and LX tape available for cost price.

### **Lighting Accessories**

The theatre stocks a range of fixture accessories including gel frames, gobo holders, floor stands, scaffold bars, grelcos, lighting gels, cables and adaptors.



Email: [george@redgravetheatre.com](mailto:george@redgravetheatre.com)

Phone: 0117 3157 605

Venue: Redgrave Theatre, Percival Road

Office: The Chateau, 2 Percival Road

## Circuits

144x 15a distributed as follows (see plan for position of bars)

Bar/Position	Circuits	Numbering
FOH 1 fixed IWB	14	1-14
FOH 2 fixed IWB	12	15-26*
FOH 3 fixed IWB	4	120-123
FOH SL 1 Boom IWB	6	43-48
FOH SL 2 Boom IWB	6	31-36
FOH SR 1 Boom IWB	6	49-54
FOH SR 2 Boom IWB	6	37-42
LX 1 drill winch IWB	12	61-72
LX 2 drill winch IWB	12	73-84
LX 3 drill winch IWB	12	85-96
LX 4 drill winch IWB	12	127-138
SL Perch fixed IWB	4	112-115
SR Perch fixed IWB	4	116-119
Stage Level DSL	6	97-99, 103-105
Stage Level DSR	6	139-144
Stage Level USL	3	106-108
Stage Level USR	3	109-111
Fly Floor SL	6	55-57, 124-126
Orchestra Pit	3	100-102
Auditorium Followspots	2	27-28

\*Circuit 21 cannot be used without prior permission, fixed for projector



Email: [george@redgravetheatre.com](mailto:george@redgravetheatre.com)

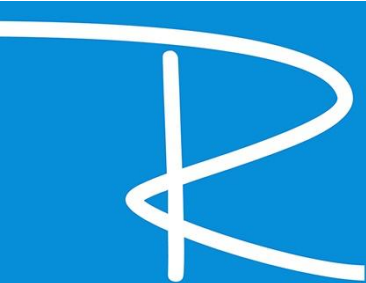
Phone: 0117 3157 605

Venue: Redgrave Theatre, Percival Road

Office: The Chateau, 2 Percival Road

## Generic Lantern Stock

<b>No.</b>	<b>Fixture</b>	<b>Angle</b>	<b>Wattage</b>	<b>Accessories</b>
<b>Profiles</b>				
13	ETC Source 4 Zoom	15/30°	750W	Shutters, B-Size Gobo
6	ETC Source 4 Zoom	25/50°	750W	Shutters, B-Size Gobo
14	ETC Source 4 Jnr Zoom	25/50°	575W	Shutters, M-Size Gobo
2	ETC Source 4 Fixed	26°	750W	Shutters, M-Size Gobo
<b>Fresnels</b>				
31	Selecon Rama HP	7/50°	1000W	Barn Doors
8	Selecon Acclaim	6/60°	650W	Barn Doors
<b>Pars</b>				
14	Par 64 (CP62)	24°	1000W	
4	Par 16 (GU10)	24°	40W	
<b>Floods</b>				
5	Strand Coda	45°	300W	
<b>House Lights</b>				
	GDS Arc System (fixed)			DMX U2 or remote controlled
	GDS Blues System (fixed)			Box1 - SR & SL, Box2 - Upstage



Email: [george@redgravetheatre.com](mailto:george@redgravetheatre.com)

Phone: 0117 3157 605

Venue: Redgrave Theatre, Percival Road

Office: The Chateau, 2 Percival Road

## Hire Lantern Stock

<b>No.</b>	<b>Fixture</b>	<b>Angle</b>	<b>Wattage</b>	<b>Cost/Day Ex VAT</b>	<b>Cost/Wk Ex VAT</b>
<b>Followspots</b>					
2	Robert Juliat Buxie	10.5/22.5°	575W	15.00	40.00
<b>Moving Lights</b>					
2	iSolution Xperior 300SZ Profile	15/35°	300W	20.00	50.00
2	eLumen8 Kudos CM 300ZS Wash	10/60°	19x10W	20.00	50.00
2	Chauvet Rogue R2 Wash	12/49°	19x15W	20.00	50.00
<b>LED Lanterns</b>					
4	ETC ColorSource CE Spot LED	36°	147W	15.00	30.00
4	ETC ColorSource Par LED	24.9°	90W	10.00	25.00
10	ETC ColorSource Par Deep Blue LED	24.9°	90W	10.00	25.00
8	Stairville Show Bar TriLED	N/A	18x3W	10.00	25.00
<b>Effects</b>					
1	Antari Z350 hazer with fluid			15.00	30.00
1	ICE101 Low Fog DMX with fluid + ice			15.00	30.00
1	400mm Mirror Ball with Rotator			N/A	N/A



Email: [george@redgravetheatre.com](mailto:george@redgravetheatre.com)

Phone: 0117 3157 605

Venue: Redgrave Theatre, Percival Road

Office: The Chateau, 2 Percival Road

## **Sound**

### **Speakers**

#### **FOH System, Passive**

4x Martin Audio Blackline X10 (FOH)

2x Martin Audio Blackline X115 (Subs)

2x Martin Audio Blackline X10 (Centre)

#### **Stage/Foldback**

2x Verve 112MA Wedge (passive)

2x Mackie C200 Wedge (passive)

2x RCF Acustica C3108

3x Yamaha MSP5 (active)

2x RCF Acustica C5212-W

#### **Amps**

1x Lab Gruppen FP10000Q (FOH)

2x Yamaha PX5 (Centre/Subs)

2x Yamaha P5000S (Foldback)

1x PPX300 (Spare)

#### **Mixers**

1x Behringer X32

#### **Multicore**

1x Behringer S16 Digital Snake

1x Behringer S32 Digital Snake

1x 20m XLR Stage Box (8 input 4 output)

**\*Please note that we do not have an analogue snake in the theatre. If you require this, please bring your own.\***

#### **Mic Stands**

12x K&M 210/9 Tall Mic Stand

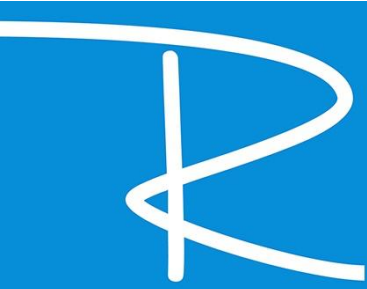
1x Fixed Base Mic Stand

1x RAT Stand

6x K&M 259 Low Level Mic Stand

4x Table Top Mic Stand

2x Yamaha Speaker Stand



Email: [george@redgravetheatre.com](mailto:george@redgravetheatre.com)

Phone: 0117 3157 605

Venue: Redgrave Theatre, Percival Road

Office: The Chateau, 2 Percival Road

## **Audio Visual**

### **Projector (Hireable)**

1x NEC PA522U 5.2K WUXGA (Default lenses NP13ZL or NP30ZL, fixed focus for screen). VGA & HDMI from technical box and DSR.

### **Screen**

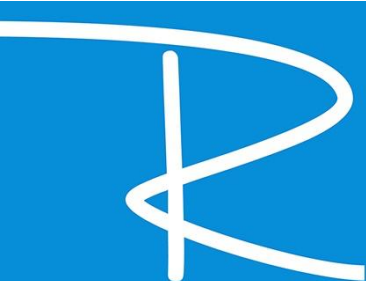
1x 5.8m x 4.6m Cinema screen - fixed 1.5m back from front of stage on electric winch (must not be obstructed by set). Situated between front of stage and house tabs, central position. Screen takes 35 seconds to drop.

### **Playback/Processors (Hireable)**

1x Mac Mini - With Qlab

1x Focusrite Saffire Pro 40

1x DVD/Blu Ray Player



Email: [george@redgravetheatre.com](mailto:george@redgravetheatre.com)

Phone: 0117 3157 605

Venue: Redgrave Theatre, Percival Road

Office: The Chateau, 2 Percival Road

### Audio Visual (Hireable)

No	Item	Cost/Day Ex VAT	Cost/WK Ex VAT
6	Shure SM58	5.00	10.00
6	Shure SM57	5.00	10.00
4	AKG HM1000 Hanging Mic with CK31/CK33 Capsule	10.00	15.00
3	AKG GN15E Gooseneck	5.00	10.00
1	AKG Drumset Kit Session	10.00	30.00
2	Rode NT5 Matched Pair	5.00	10.00
2	AKG C568B Shotgun	5.00	10.00
2	Audio Technica AT815N	5.00	10.00
6	BSS AR-133 Active DI Box	2.00	5.00
16	Sennheiser EW 312 Headset	20.00	50.00
2	Sennheiser EW335 Handheld	20.00	50.00
	Sennheiser Headset Set of 4	60.00	150.00
1	NEC PA522U 5.2K WUXGA	50.00	150.00



Email: [george@redgravetheatre.com](mailto:george@redgravetheatre.com)

Phone: 0117 3157 605

Venue: Redgrave Theatre, Percival Road

Office: The Chateau, 2 Percival Road

## **Backstage Facilities**

All changing rooms include a show relay for onstage monitoring and talkback from the technical box. All are heated and kept in good condition, it is the hirer's responsibility to keep these areas clean and tidy and upon leaving ensure they are returned to good condition. If the duty manager deems the state of the dressing rooms unacceptable the hirer will be liable to an additional cleaning charge on the final invoice. A limited supply of teas and coffees are provided as part of the hire, however companies must provide their own milk. A small amount of crockery is provided. Hot food may only be eaten outside or backstage, none should be taken on stage or into the auditorium.

### **Green Room (Ground) 4-8 people**

1 x Full length mirror

1 x Costume rail

1x Microwave

1x Kettle

2x Unisex toilets

5x Illuminated makeup mirrors

1 x Fridge Freezer

1x Hot Water Urn

Small kitchen

### **Dressing Room (Upper) 15-20 people**

2x Full length mirror

1x Costume rail (no hangers)

1x Unisex toilet

5x Illuminated makeup mirrors

2x Sinks

### **Dressing Room (Basement): 15-20 people**

2x Full length mirror

2x Costume rails

8x Illuminated makeup mirrors

### **Pit Dressing room (Basement): 5-10 people**

Overflow area available on request before arrival

5x makeup mirrors

1x Costume rail